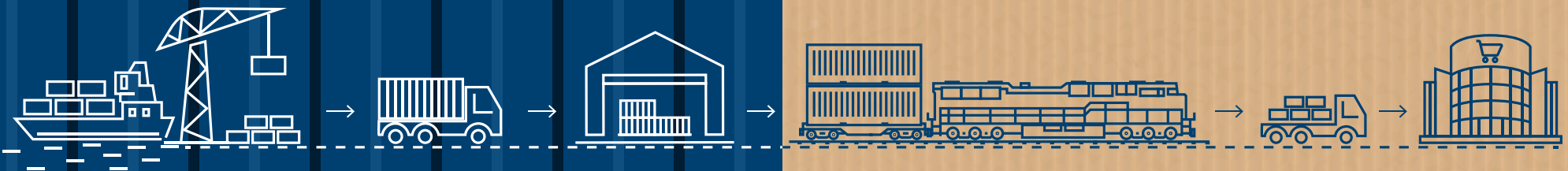


FROM POINT OF PRODUCTION TO POINT OF CONSUMPTION

End-to-End Multimodal Logistics Services



DISCOVER OUR SMART SUPPLY CHAIN SOLUTIONS

Reliable and Predictable | Technology

enabled | Value added services



ABOUT US

DP World is a leading enabler of global trade and an integral part of the supply chain with a global portfolio of 78 operating marine and inland terminals supported by over 50 related businesses in over 40 countries across six continents with a significant presence in both high-growth and mature markets.

In India, we have been operating container terminals since 1997 and was instrumental in building the **first Public-Private Partnership (PPP) project** for the Government of India. Today, with an **investment of over USD 1.2 Billion**, we operate six terminals at major port locations with over 6 million TEU of gross capacity.

The six container terminals in India are registered under **Hindustan Ports Private Limited (HPPL)**, a wholly owned subsidiary of DP World. HPPL's current logistics offering also includes Container Rail Road Services (CRRS) which operates container trains that connect ports to the hinterland.

In 2018, through a joint venture with the country's National Investment Infrastructure Fund (NIIF), we created Hindustan Infralog Pvt. Ltd. (HIPL) to **invest up to USD 3 Billion in the logistics sector in India**. Under this partnership, we acquired 90% of **Continental Warehousing Corporation (Nhava Sheva) Ltd (CWCNSL)**, a leading integrated multimodal logistics provider. In 2018, DP World also won a bid to develop, operate and manage the **Free Trade Warehousing Zone** at Jawaharlal Nehru Port, Nhava Sheva, which will position India as a global trading hub.

With our robust portfolio of terminal assets, PFTs, CFSs, multimodal transport solutions, Cold chain facilities and value added services, we cater to the complete spectrum of logistics requirements of customers across all levels in the supply chain. We leverage the massive opportunities offered by digital technology to enable cargo owners to move their goods around the world in ways that are smarter, faster, safer and more cost-efficient.

We have also created value through our global sustainability program '**Our World, Our Future**'. DP World Mundra is one such example, investing USD 1.3 Million on projects, **supporting 1,00,000 people in the local community**.

OUR KEY ATTRIBUTES



CULTURE & PEOPLE

Our people are our greatest asset. We encourage an inclusive culture, which recognizes and values diversity. We are always looking for ways to improve



PRODUCTS & SERVICES

Our multimodal logistics solutions and value-added services allow us to cater to the complete spectrum of logistics requirements. We leverage technology as an enabler towards more efficient and cost-effective trade solutions



INNOVATION

We are committed to innovation that can turn today's challenges to tomorrow's opportunities. Among our achievements, are smart digital technologies like Hyperloop, to add greater efficiency to the supply chain



SAFETY & COMPLIANCE

We are committed to ensuring our business meets the highest standards, procedures and processes. We have been certified as the first international port operator to partner in the C-TPAT initiative by US Customs and Border Patrol.

Our Indian ports are certified to **ISO: 9001-2015, ISO: 14001-2015, ISO: 45001:2007, ISO 27001:2013, ISO 28000:2007** and **ISPS*** standards



Port Terminals

- Portfolio of six terminals at key gateway ports
- State-of-the-art, infrastructure and equipment to service the next- generation large size vessels
- Best in class Gross Crane Productivity of 30 moves per crane hour
- Total quay length of 3,502 metres with a total gross capacity of 6.5 Million TEUs
- Total reefer container storage points of 2,616, handles 45% of the reefer EXIM trade & facilitate the movement of commodities such as Sea Food, Pharmaceuticals, Fruits, Buffalo meat amongst others
- Seamless connections to over 60 ICD locations across India
- Customize offerings for Direct Port Delivery
- Pioneer in introduction of automation in the Indian port sector such as gate automation, remote controlled Quay Cranes, Smart Gates with RFID technology, Reefer Monitoring System and Smart Control Room (Video Wall)



Rail Services

- Connectivity from north India to key gateway ports: Mundra, Pipavav & Nhava Sheva
- Own and operate 30 railway rakes
- Operate more than 180 EXIM and domestic services monthly
- Double stack container train operations
- Strategic partnerships with key ICD locations to provide rail connectivity
- Provide domestic services covering key metro locations
- Reliable transportation and cost effective solutions with faster transit-time specifically over long distance



Supply Chain Services (DELEX)

- Door to door services via strategic tie-up with airlines
- Surface parcel delivery, across India - approx. 10 million packages per year
- Fleet of over 150 trucks covering more than 5000 pin codes' service area
- Over 100 PUDO centers, warehouses, hub & delivery spokes
- Third party logistics warehouse management services including line-feeding solutions
- Contract logistics solutions across industries specialising in automotive, hi-tech, consumer goods & retail
- Special value-added services: Forward Stocking Locations (FSL) network, Intracity last mile delivery; online track & trace

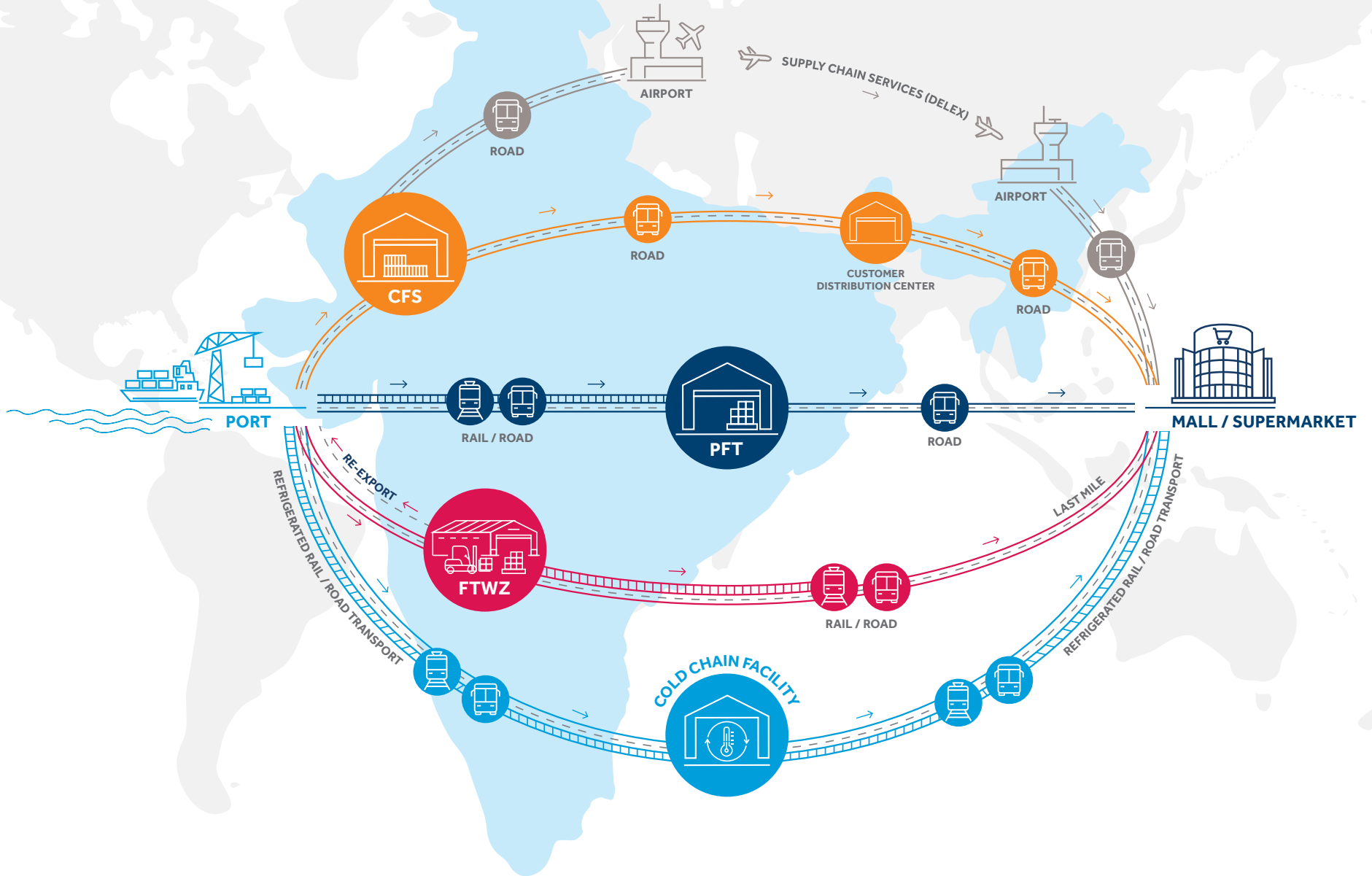


Free Trade Warehousing Zone

- Building FTWZs at two major Gateway Ports in India: JNPT, Mumbai and Chennai
- Fully independent entity and mega trading hubs
- Provide warehousing, customs and value-added services
- Strategic proximity to the port, with direct access to both global and domestic markets
- Provide a platform that allows all four entities; domestic buyers, domestic suppliers, foreign buyers, foreign suppliers to interact with each other
- Help foreign entities to start EXIM business in India within one day
- Offer duty deferment benefits for upto 5 years; free up working capital, reduction of buffer stock, initiate volume discount and ensure higher inventory visibility

ENABLING SMARTER TRADE

CONNECTING COUNTRIES. BUILDING ECONOMIES



PREDICTABILITY

We systemize our products through IT and technology to govern processes and deliver real time visibility, and make for results better than expectations



NETWORK OF OWN ASSETS

We help reduce reliance on third-party operators, offering better control on transit time & cost



CUSTOMIZED & FLEXIBLE

We tailor ourselves to our customers' needs to resolve their supply chain challenges



COST EFFICIENT

We offer integrated solutions to improve the effectiveness of the supply chain



Container Freight Station

- Network of 5 CFSs pan-India at major port locations
- Total 89,200 sq m. of warehousing space
- Best-in-class facilities for bonded warehousing
- LCL consolidation/deconsolidation services
- Last mile/first mile road transportation services
- Services for temperature-controlled cargo
- Value-added services; labelling, strapping & palletising



Private Freight Terminals

- Pan India network of 7 terminals at key markets with state-of-the-art infrastructure for both EXIM & domestic cargo
- Bonded and non-bonded warehouse services, at a single location
- Total area of over 900 acres along with over 96,000 sq m. warehousing space
- Multi-modal services with best in class connectivity via road and rail network
- Services for containerised, liquid as well as bulk cargo specialising in steel, building material, auto ancillary, cement, fertilisers, edible oil, chemical etc
- Aggregation/disaggregation services for both EXIM and domestic cargo
- Value added services; store-door delivery, custom clearance and stuffing & de-stuffing, container cleaning & repair, liquid cargo storage



Cold Chain Services

- One stop solution for transportation, warehousing & value add services with Last Mile PAN India distribution
- Current portfolio spreads across six major locations in India; Chennai, Mumbai, Sahibabad (Delhi), Hyderabad, Bengaluru and Surat
- Total pallet capacity of 26747 and total fleet size of 2000+
- Strategic partnerships with multiple vendors to provide seamless services
- Offer a hyper delivery model & warehouse models in 20 locations
- Service more than 200 customers and cater key segments, farm to ready-to-eat food



TECH PLATFORMS

BHARAT TRADE

- Launched the 'Bharat Trade Portal' in 2016 on a pilot basis in Cochin
- Enable smooth paperless transactions
- Offer a single window to customers and trade at large
- Have successfully processed over 75,244 electronic transactions and containers, since launch

ZODIAC

- An in-house developed, advanced Terminal Operating System (TOS)
- Provide an integrated platform of Gate-Yard-Vessel-Movement via high-level of automation
- Equipped with advanced modules that optimise vessel side productivity, enabling faster turnaround of containers on land and rail side
- Offer real-time execution with smart controls that enhances terminal efficiency and productivity

REGISTERED OFFICE MUMBAI

Darabshaw House, Level 1,
Narottam Morarji Road, Ballard Estate,
Mumbai - 400001
Phone Number : +91 22 49063329

PORTS & TERMINALS

Capt. Ravinder Johal

Regional Head,
Commercial Liner Sales (Ports)
E: ravinder.johal@dpworld.com

LOGISTICS

Chandrashekhar Pitre

Regional Head,
Commercial & Marketing
E: c.pitre@dpworld.com

PV Sheshadri

CEO Supply Chain Management
E: sheshadri.pv@dpworld.com

Dinesh Tarachandani

Head - Global Logistics, SCO Region
E: dinesh.tarachandani@dpworld.com

Ranjit Ray

CEO FTZ
E: ranjit.Ray@dpworld.com

www.dpworld.com

